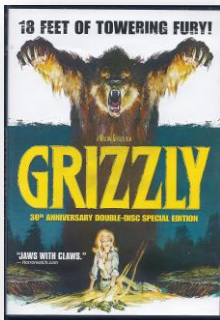


# LST3K “Summer Scares” Movie Kit



## DOUBLE FEATURE

Movies now streaming on [Hoopla](#), free with your library card.



**Grizzly (1976). PG.**

A super hungry pre-historic Grizzly bear is terrorizing campers. Will park rangers be able to stop it? Think *Jaws*, but on land!

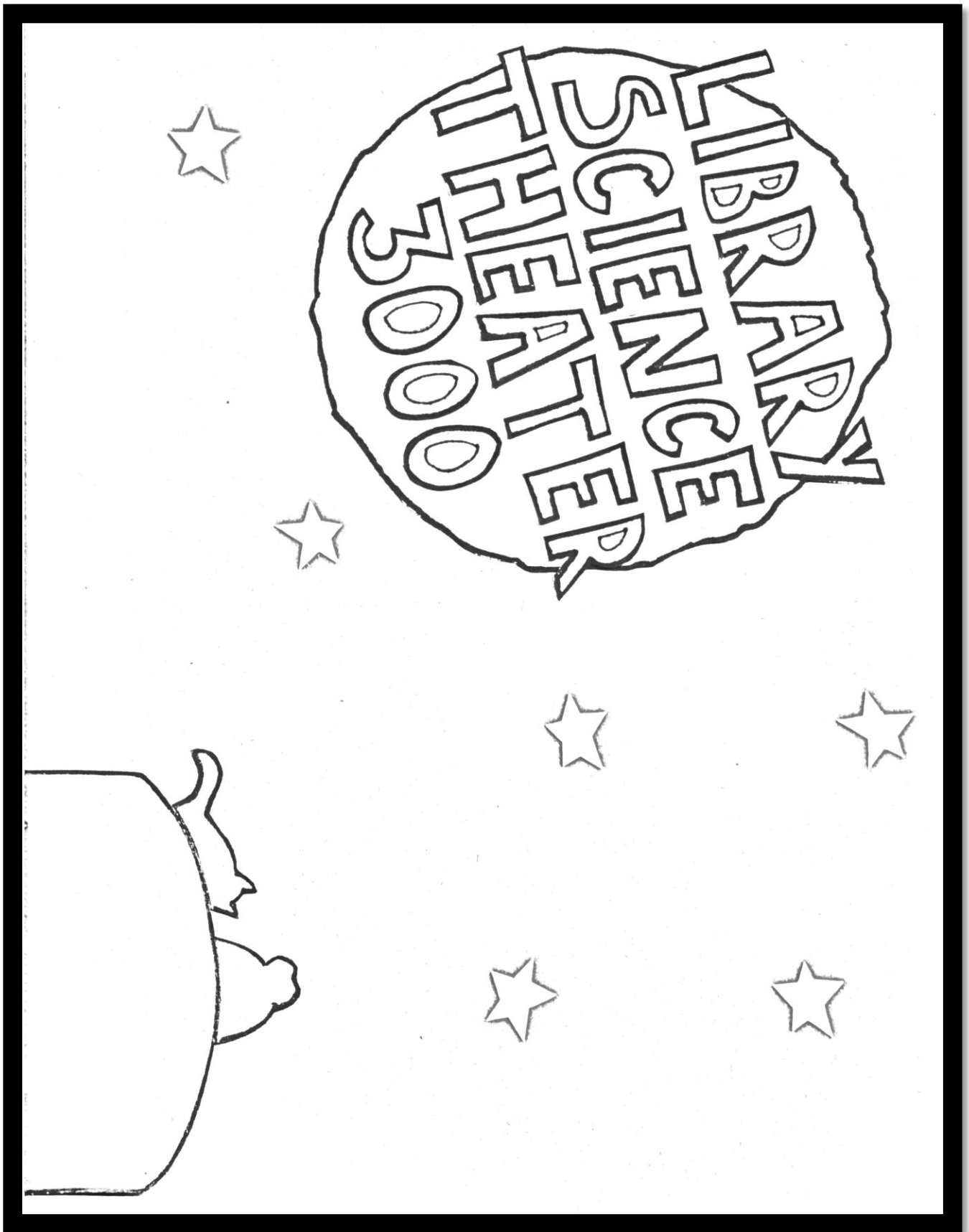


**Summer of Fear (1978). PG-13.**

Everything starts to go wrong for Rachel when cousin Julia comes to live with the family. Could she be a witch? Wes Craven directs this made-for-TV movie based on the YA novel by Lois Duncan.

Want more? Follow us on Instagram: [@NPLmain.teens](#)

# COLOR ME!



# BAD MOVIE BINGO

## Playing Tips

- Share cards and host a virtual watch party with friends. See who can get “bingo” first.
- Alternatively, put a piece of candy on each square and eat your way through the movie. An excellent option for solo play!

<b>B</b>	<b>I</b>	<b>N</b>	<b>G</b>	<b>O</b>
“Double twist” ending	Car chase	Power struggle between local officials	Spooky premonitions / dreams	Character ignores obvious sketchy behavior
Makeup / special effects change between cuts	The local expert	Disproportionate number of women as victims	Explosion	River of blood
Obvious rip-off of another movie	Unforgivably bad music	<b>FREE</b>	Victims running and falling	I hate you, you hate me, let’s fall in love!
Killer P.O.V. camera shot	Attack of the SUPER animal	The villain won’t die	Freeze frame ending	This is man’s work!
Animals sensing evil	Bad acting	[Insert Native American stereotypical / appropriated camp name here]	Parents just don’t understand	Narrative relies on bad cultural stereotype(s)

<b>B</b>	<b>I</b>	<b>N</b>	<b>G</b>	<b>O</b>
Bad acting	Character ignores obvious sketchy behavior	Parents just don't understand	Killer P.O.V. camera shot	River of blood
"Double twist" ending	The villain won't die	Unforgivably bad music	Car chase	I hate you, you hate me, let's fall in love!
Power struggle between local officials	Freeze frame ending	<b>FREE</b>	Spooky premonitions / dreams	Narrative relies on bad cultural stereotype(s)
Obvious rip-off of another movie	This is man's work!	Explosion	The local expert	Makeup / special effects change between cuts
Attack of the SUPER animal	Disproportionate number of women as victims	[Insert Native American stereotypical / appropriated camp name here]	Victims running and falling	Animals sensing evil

<b>B</b>	<b>I</b>	<b>N</b>	<b>G</b>	<b>O</b>
Parents just don't understand	I hate you, you hate me, let's fall in love!	Power struggle between local officials	Bad acting	Animals sensing evil
Killer P.O.V. camera shot	The local expert	Spooky premonitions / dreams	[Insert Native American stereotypical / appropriated camp name here]	Disproportionate number of women as victims
Car chase	The villain won't die	<b>FREE</b>	Explosion	Unforgivably bad music
"Double twist" ending	Freeze frame ending	Character ignores obvious sketchy behavior	Obvious rip-off of another movie	Attack of the SUPER animal
River of blood	Victims running and falling	Narrative relies on bad cultural stereotype(s)	Makeup / special effects change between cuts	This is man's work!

<b>B</b>	<b>I</b>	<b>N</b>	<b>G</b>	<b>O</b>
Animals sensing evil	Bad acting	"Double twist" ending	Freeze frame ending	I hate you, you hate me, let's fall in love!
Disproportionate number of women as victims	The local expert	Narrative relies on bad cultural stereotype(s)	Killer P.O.V. camera shot	Makeup / special effects change between cuts
The villain who won't die	Parents just don't understand	<b>FREE</b>	River of blood	[Insert Native American stereotypical / appropriated camp name here]
Unforgivably bad music	Explosion	Power struggle between local officials	Attack of the SUPER animal	Spooky premonitions / dreams
Obvious rip-off of another movie	Car chase	This is man's work!	Character ignores obvious sketchy behavior	Victims running and falling

<b>B</b>	<b>I</b>	<b>N</b>	<b>G</b>	<b>O</b>
Disproportionate number of women as victims	Killer P.O.V. camera shot	Character ignores obvious sketchy behavior	Freeze frame ending	Obvious rip-off of another movie
Bad acting	River of blood	Unforgivably bad music	This is man's work!	The local expert
Spooky premonitions / dreams	Narrative relies on bad cultural stereotype(s)	<b>FREE</b>	Car chase	Explosion
Makeup / special effects change between cuts	Animals sensing evil	Victims running and falling	"Double twist" ending	[Insert Native American stereotypical / appropriated camp name here]
I hate you, you hate me, let's fall in love!	Attack of the SUPER animal	Power struggle between local officials	The villain won't die	Parents just don't understand